



Pan Am 103 Lockerbie Memorial Museum

Tundergarth Iconic Sites

Contemporary & Historic

November 15, 2023



Tundergarth Kirks Iconic Sites



Tundergarth Churches

Three miles from Lockerbie's High Street sits a revered site that contains the ruins of a 1771 Celtic Kirk and a 1900 former Church of Scotland that look out over the field where the nose cone of Pan Am 103 plummeted to the ground.

The graveyard in this historic place of pilgrimage holds the remains of generations of local families, going back to Viking times, who lie at rest alongside several of the victims.

A Memorial Remembrance Room there commemorates the lives lost in the bombing. There is a 270 victims' color portrait gallery of photographs displayed on six banners. Two computers display the expansive Living Memorial digital collection of 270 intimate multimedia profile pages, containing personal photographs and recorded remembrances. Visitors are invited to learn, honor and upload tributes, write messages, and contribute tokens of memory.

Soon, with the development of the 1771 Celtic Kirk into a Memorial Museum, it will be a place of tribute and education to include an expanded exhibition to tell the story of human dignity, courage, sacrifice and contemplation.

Tundergarth: Iconic Sites Overview



Tundergarth: Iconic Sites & Surroundings



Tundergarth: Iconic Sites & Surroundings



Tundergarth: 1771 Kirk Ruin



Pan Am 103 Lockerbie Memorial Museum

Mission:

- Raise awareness and educate about the December 21, 1988, terrorist attack against America over Lockerbie Scotland (Lockerbie Air Disaster)
- Commemorate and memorialize the faces and lives of the 270 victims with a perpetual Living Memorial
- Document and clarify the attack history
- Explore the attack and its impact
- Examine the relevance of the attack to contemporary society and the flying public

Purpose:

- Create a sense of place and a site of pilgrimage
- Provide a landmark destination that connects visitors to the location where the nose cone of the plane crashed and a majority of victims were found
- Create impactful experiences using state of the art geo-location aware technology sensitive to its surroundings
- Give public access to the multimedia interactive victims Living Memorial and virtual Visitors Guest Book
- Celebrate Lockerbie's rich legacy, history, culture and lesser-known traditions. Reveal the community's extraordinarily generous and compassionate response in the aftermath of the Pan Am 103 bombing earning the well-deserved tribute as "the town that taught the world a lesson in humanity."
- Explore first-hand stories that emerged of ordinary people, united by tragedy, with inspiring stories of hope, loss, sacrifice, resilience, generosity and advocacy
- Emphasize the scale of the attack in the context of modern global terrorism

Who might visit:

- Individuals seeking to connect with the significance of the December 21st 1988 terrorist attack and to remember the victims.
- Global communities impacted by the attack including victims' loved ones, individuals within the Lockerbie and Scottish/UK communities and others
- Global tourists with an interest in history, memorials, archeology, architecture and genealogy
- Academics, scholars, students and schoolchildren
- Museum goers and tour groups

Location Aware Experiences



Lockerbie: A Collection of Journeys & Experiences



Garden of Remembrance



Lockerbie



Somerton House Hotel

The Queens Hotel



Tundergarth Mains

Tundergarth



Location-aware Technology for Handheld Device Experiences

Storytelling:

Utilizing age-appropriate content, custom audio journeys can immerse visitors in Lockerbie's many stories and long history to reveal the hidden traditions of this special place.

Placemaking:

Location aware technologies create unique opportunities of discovery inside the museum exhibition and throughout Lockerbie's iconic sites.

A travel guide for visitors will mark points of interest and services such as restaurants, hotels, the train station, and the post office.





Other Location Sensitive Exhibitions
9/11 Memorial Museum
London Mithraeum





WANDA LEE
GALANT

RONALD L.
GAMBIA

HARVEY JOSEPH
GARDNER III

TERENCE D.





001

700
on
2000



Pan Am 103 Lockerbie Memorial Museum

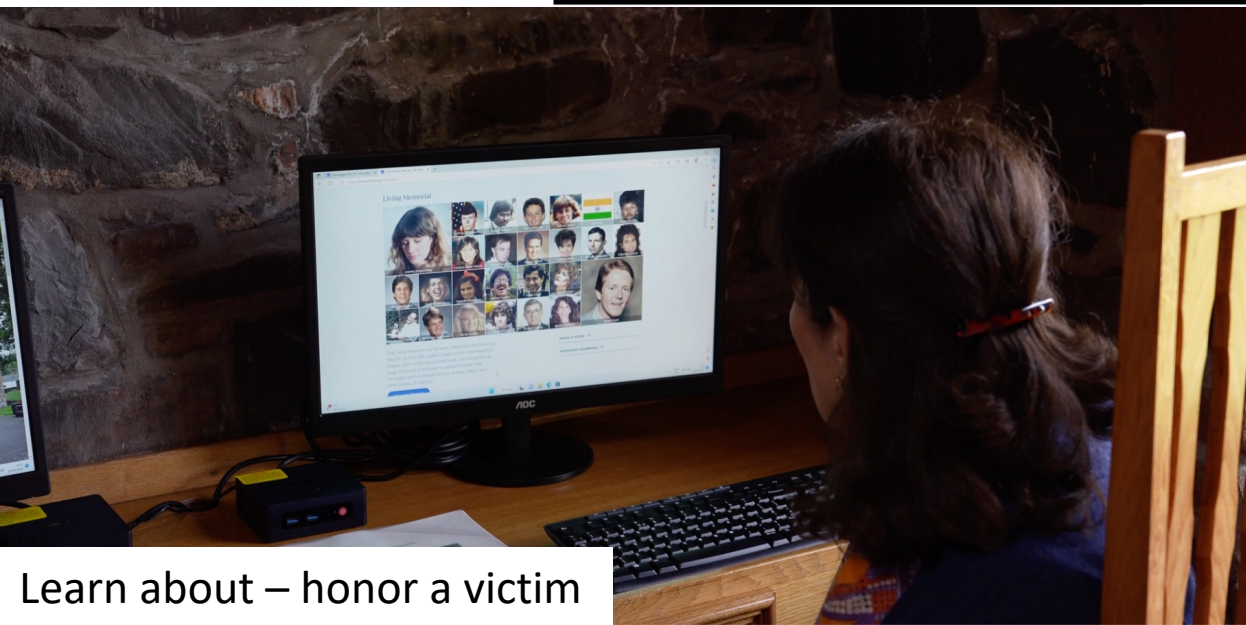
What might visitors do?



Museum Exhibitions: What might people do?



Museum Exhibitions: What might people do?



Combining Historic & Contemporary
Pan Am 103 Lockerbie Memorial Museum
1771 Kirk Ruin
Materials & Form Research



Contemporary + Historic



Mirrored Structured



Loch Lomond National Park



Ecuador



Loch Lomond National Park



Ecuador

Rooftop Viewing Platform





PAN AM 103 LOCKERBIE LEGACY FOUNDATION

CONTACT

Lori Carnochan

Lockerbie-UK Project Manager

Pan Am 103 Lockerbie Legacy Foundation

Email: Project.Mgr@PA103LL.org

Call/Text/WhatsApp: +44 7921 908989

M. Victoria Cummock

Founder and CEO

Widow of Passenger John B. Cummock

Email: v.cummock@PA103LL.org

Call/Text/WhatsApp: +1 (305) 775-1071



7310 SW 47th Court
Miami, FL 33143
Email: info@PA103LL.org
Telephone: +1 (305) 665-6740